



Scheduling: The Forgotten Art

Dr. Alicia Aitken
GM Strategy Delivery & Governance

Who we are and what we do

ABOUT ANZ

187
Years

33
Markets

10,000,000
Customers

550,000
Shareholders

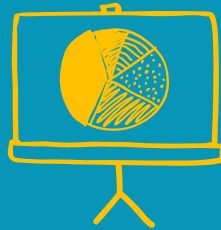
40,000
Employees

A bit about me.....

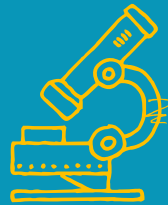
Tech Start-
Up



Consultancy



Research



Sold It



Corporate



2011
“Schedule is King”
- S.Gumley

What Happened?

What Did We Do About It?

2021
“What’s a Scheduler?”
- ANZ Banker

Did Agile Kill the Schedule?



TO DO

WORK

DONE

- Create items via email
- IP addresses for tracking
- Do download app
- Developing disks
- Loading screen update
- Download site
- Update videos
- ReWork UI/UX
- Redesign home page
- Add search at publications
- Functional test
- ReWork design icons
- Release v2.0
- Receiving the query

- Test new UI
- import tasks from CSV
- CSV proc fails if size > 7000
- Development of user account
- Group and create reports
- Success notice
- create mail board
- Report software
- make user history
- create links
- Demo app for execs
- Payment options
- API
- Add links to DB
- com. working and working
- off like mode
- Send button
- Settings -> Members -> menu error!
- Notifications are not sent
- Make home page
- Reports
- BT
- Demo site for execs
- In app chat interaction
- Sidebar design
- after 5000
- Tool tips
- Error in
- interface
- Developing landing screen
- checkbox
- NLSFCSS



Building the Case for Schedules

Putting the Power Back in the Hands of the Executives to Drive Business Outcomes

Know Where We Are Now

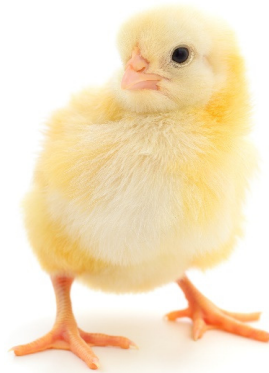
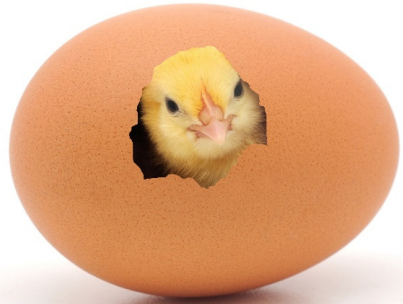
- What needs to be done
- Who needs to do it
- By when
- With whose help

Know Where We Are Going

- Harnessing the predictive power of the schedule
- What happens if we take longer?
- What happens if others take longer?
- What happens if.....?

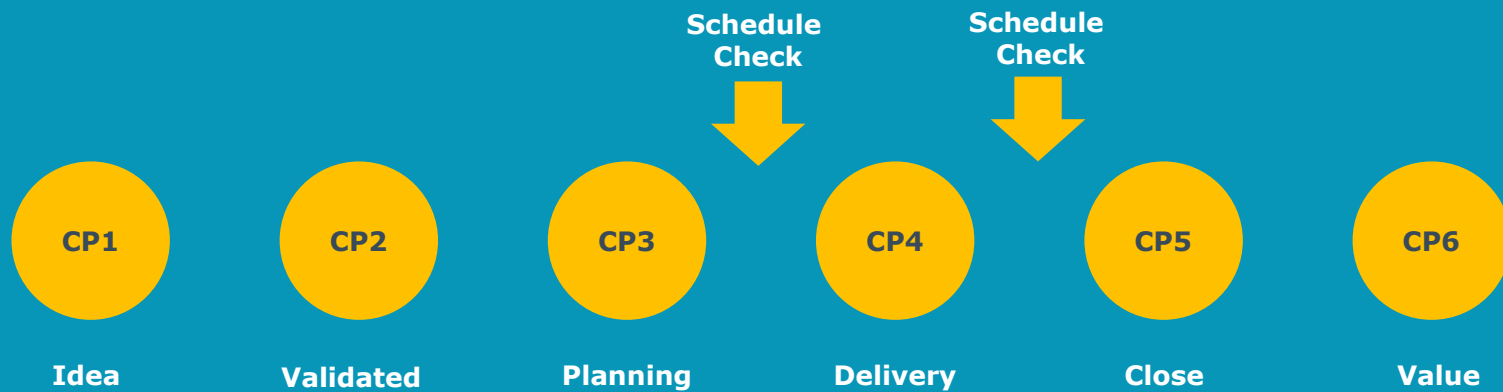
Know How We Are Getting There

- Agile Sprints
- Plan, Execute Close
- Mix of Both





How are we making it stick?



In Summary

- Now is the renaissance of the forgotten art of scheduling
- Schedules are adaptive and work agnostic of delivery method
- The predictive power of the schedule puts the control back in the hand of executives to drive business outcomes



Schedules Drive Delivery Success

Dr Alicia Aitken

